

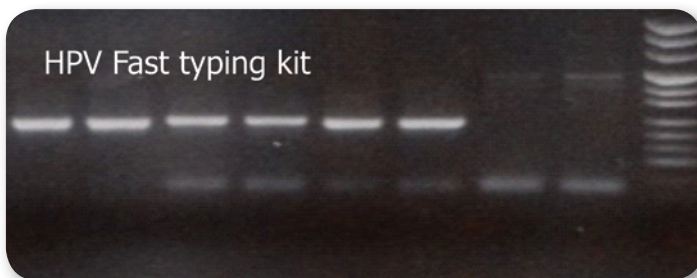
**BACTERIOLOGY & VIROLOGY**

**HPV (agarose gel)**

Because of the strong association between Human Papilloma Virus (HPV) infection and cervical cancer, detection of HPV DNA in cervical samples is an available option to identify women at risk of developing cancer. The papilloma virus fast typing kit is a system of the screening of the HPV DNA and for detection of the most frequent high risk HPV.

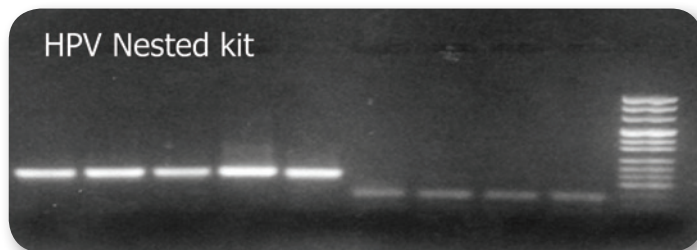
The screening is based on the use of a consensus primer pair derived from the consensus sequence of the L1 open reading frame the amplification of this conserved region allows the detection of both all known clinical relevant HPV and potentially novel HPV. The amplification for HPV typing uses two consensus sequence primers pair within the E6 and E7 open reading frames; these primers allows the detection of high risk HPV 16, -18, -31, -33, -35, -52, -58. The kit includes a master mix for the B globin gene amplification to check the DNA quality; the kit includes also a dilution of HPV 16 DNA plasmid as positive control to avoid negative results from failures of amplification reaction.

Code	Name of kit	Technical specs	Amount of tests	Info	Additional info
PL.00	Papilloma Virus fast typing Kit	Agarose Gel Electrophoresis Kit	50	CE/IVD	Fast genotyping
PL.02	Papilloma Virus nested Kit	Agarose Gel Electrophoresis Kit	50	CE/IVD	High sensitive for paraffin samples
PL.02-PL.03	HPV nested + High Risk HPV typing Kit	Agarose Gel Electrophoresis Kit	50	CE/IVD	Genotyping by enz. restr. digestion



1 2 3 4 5 6 7 8 9

Papilloma Virus Fast typing Kit; 1-6 Positive samples. 7-8 negative samples 9 Molecular ladder



1\* 2\* 3\* 4\* 5\* 6\* 7\* 8\* 9\* 10\*

Papilloma Virus nested Kit; 1\*-5\* Positive samples. 6\*-9\* negative samples 10\* Molecular ladder

