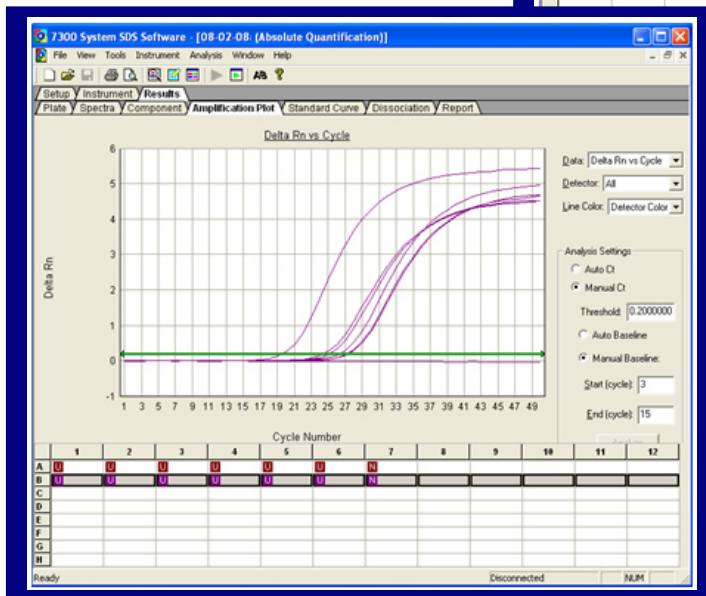
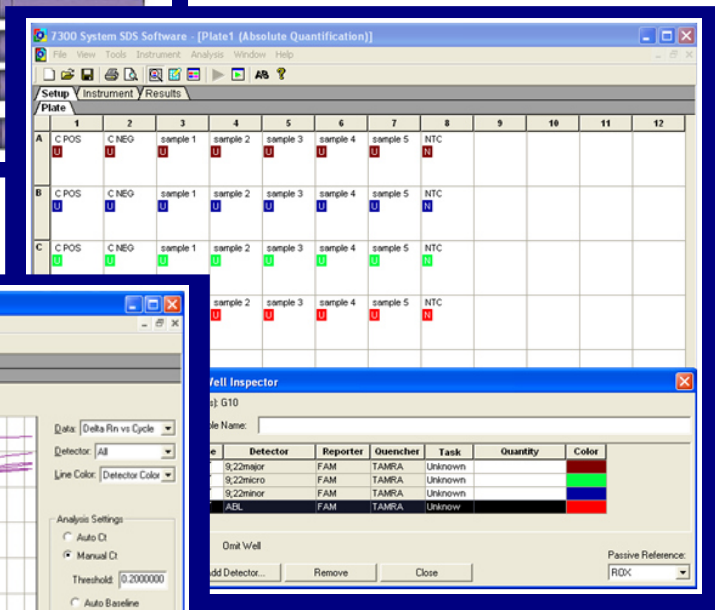
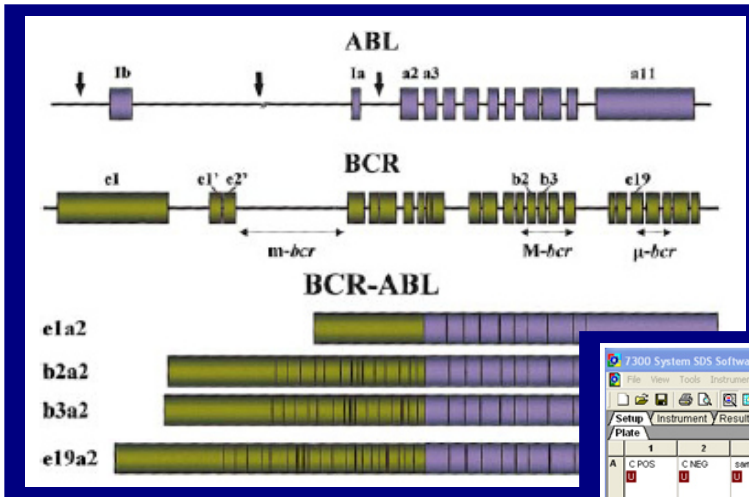


*Sistema per la rilevazione qualitativa dei trascritti di fusione BCR-ABL M-bcr (p210), m-bcr (p190) e  $\mu$ -bcr (p230) mediante Real Time PCR.*

## **TRANSLOCATION KIT *t(9;22)* screening-RQ**

cod. T0922SRQ



### **EXPERTTEAM**

via della Libertà 12  
 30175 Marghera (VE) - Italia  
 tel.: +39 041 5093101  
 fax: +39 041 5093102  
 e-mail: [experttm@vegapark.ve.it](mailto:experttm@vegapark.ve.it)  
[www.experteam.it](http://www.experteam.it)

