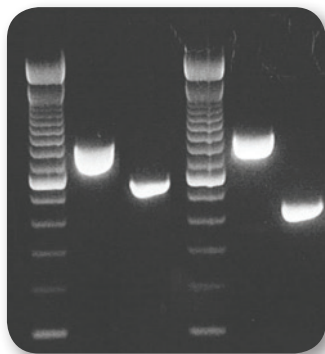


CHROMOSOMAL TRANSLOCATIONS

Chromosomal translocations are chromosomal abnormalities who occur during the chromosomal replication phase. A fusion gene may be created when the translocation joins two otherwise separated genes, an event which is common in cancer. Experteam focuses on diagnosis and monitoring of leukemias and lymphomas using Reverse Transcriptase (RT) nested PCR. A full list of available kits for chromosomal translocations can be found below.

Translocations (DNA samples)

Code	Name of kit	Technical specs	Amount of tests	Info	Additional info
T1114-35	Traslocation Kit t(11;14)	Agarose Gel Electrophoresis Kit	35	CE/IVD	Same thermal profile; high sensitivity
T1114-12	Traslocation Kit t(11;14)	Agarose Gel Electrophoresis Kit	12	CE/IVD	Same thermal profile; high sensitivity
T1418m-35	Traslocation Kit t(14;18)-mcr	Agarose Gel Electrophoresis Kit	35	CE/IVD	Same thermal profile; high sensitivity
T1418m-12	Traslocation Kit t(14;18)-mcr	Agarose Gel Electrophoresis Kit	12	CE/IVD	Same thermal profile; high sensitivity
T1418M-35	Traslocation Kit t(14;18)-MBR	Agarose Gel Electrophoresis Kit	35	CE/IVD	Same thermal profile; high sensitivity
T1418M-12	Traslocation Kit t(14;18)-MBR	Agarose Gel Electrophoresis Kit	12	CE/IVD	Same thermal profile; high sensitivity



1 2 3 4 5 6

2-3 respectively show I° and II° amplification step of Translocation Kit t(14;18) MBR

5-6 respectively show I° and II° amplification step of Translocation Kit t(14;18) mcr

1 and 4 molecular weight marker

